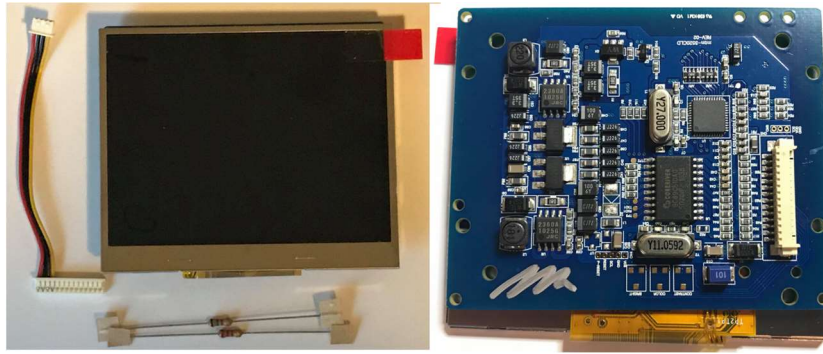


Composite Video 3.5" LCD Wiring



ATTENTION: We cannot be held responsible for any damages that may occur while attempting this mod. Proceed at your own risk!!!!

NOTE: This guide is only for the LCD & Driver Board pictured above.

STEPS:

1. Video connection: Solder Yellow wire (driver board connector pin 4) to one of the video signals on composite video board.
2. Power to LCD: Solder Red wire (driver board connector pin 1) to +7V on TE power switch (middle pin). Solder another wire from 5V (big tab of voltage regulator) to driver board's U2 voltage out leg.
3. Grounding: Solder 1st Black wire (driver board connector pin 2) to ground.
4. Contrast Dial: Solder 2nd Black wire (driver board connector pin 12) to 1.5Kohm & 2.2Kohm resistors. Solder other end of 2.2kohm to Ground. Solder other end of 1.5K resistor to pin 1 of contrast dial.
5. Adjust color and brightness ports accordingly.

